A person is shown from the side, wearing a dark jacket, typing on a laptop. The scene is set against a warm, golden sunset background with a blurred horizon. The laptop screen is visible on the left, and the person's hands are on the keyboard. The overall mood is professional and focused.

TECHNOLOGY CONSULTING

RITE ONE CONSULTING

WWW.RITEONECONSULTING.COM

RITE ONE CONSULTING

YOU ARE THE EYES THROUGH WHICH CHRIST LOOKS COMPASSION ON THIS WORLD. YOU ARE THE FEET WITH WHICH CHRIST WALKS TO DO GOOD.
YOU ARE THE HANDS THROUGH WHICH CHRIST BLESSES ALL THE WORLD. (TERESA OF ÁVILA, ADAPTED)

Technology is more than everyday tools and resources for our churches, schools, and organizations; it is the “digital” eyes, hands, and feet of our faith communities and institutions. These tools and resources can articulate our spiritual stories, help grow our communities as lively centers of faith, and empower those we serve through meaningful connections, communications, and cultivation.

At Rite One Consulting, we serve churches, schools, and organizations seeking to enhance and sustain their technology resources, while also being mindful of budgetary constraints and the finite available people resources within their institution. An investment in technology is an investment in building up the Kingdom of God because we are opening new doors for the Spirit of transformation.

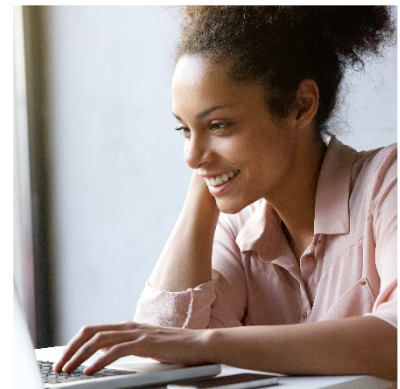
We have developed an array of technology tools and resources designed to help our clients build, measure, and maintain momentum. However, what makes us truly unique is how we tailor technology solutions to meet the needs of the churches, schools, and organizations we serve, including small and medium-sized institutions that need innovative, cost-effective, and uncomplicated solutions.

WEBSITE DESIGN, DEPLOYMENT, AND MAINTENANCE TRAINING

We build and deploy professional custom websites for our clients. Sites are also fully optimized for mobile devices and tablets and built on “end-user”-friendly content management systems (CMS) like Wix. Unlike most designers, we do not just “build a site” and “turn it over” to the client; instead, we work in partnership with our clients to train and support staff and lay leaders to manage, update, and enhance their website. We encourage our clients to deploy a website that is both “inward-focused” on members’ experiences and “outward-centric” on creating a digital evangelism tool to attract new members, increase their local community impact, and share the Good News.

SOCIAL MEDIA EXPERIENCE

Facebook, Instagram, YouTube, Twitter, WhatsApp, TikTok, Messenger, WeChat, blogging... and the list goes on. Rite One focuses on scaling and calibrating your social media channels so that your content is accessible, relevant, and regularly updated. Allow our team to help you be the best version of yourselves online.



TECHNOLOGY CONSULTING

WWW.RITEONECONSULTING.COM

RITE ONE CONSULTING

DIGITAL WORSHIP, MEETINGS, AND EVENTS

During the COVID pandemic and beyond, Rite One Consulting is committed to assisting churches, schools, and organizations with their digital media needs. With wide-scale vaccination deployment and decreased transmission risks, there is a trend and need to deploy a “hybrid” digital model as communities look to return to in-person gatherings but also to maintain their digital presence. Rite One Consulting is actively working with clients to develop and deploy cost-effective solutions to meet this emerging hybrid need for worship, meetings, and events.

MEMBERSHIP DATABASES

One of the most critical assets of a church is its membership database. It is an extension of the faith community and an essential resource for pastoral care leaders. The database allows for meaningful connections to be established, maintained, and deepened. Rite One Consulting can offer a variety of database solutions for any size congregation. Most importantly, we can help design and deploy the database solution and train staff and lay leaders to use and maintain this vital asset efficiently.

WEB-BASED NEWCOMER ORIENTATION AND MEMBERSHIP DEVELOPMENT

Technology does not grow churches, schools, and organizations; meaningful and intentional connections do! In this era, we all utilize the internet and social media to research, collaborate, and stay connected with those things and communities that matter to us. Unfortunately, too many churches do not maximize their website and social media accounts' potential to connect with and orientate newcomers and new members. Rite One Consulting can assist your team in enhancing your newcomers' and new members' digital experience.

EMAIL MARKETING AND COMMUNICATIONS

Thriving churches, schools, and organizations regularly connect with their constituents through email marketing tools like Constant Contact and MailChimp. Those tools are deployed with various success levels and often are not consistent with the institution's brand and vision. Excellent email marketing communication is well-crafted, on-brand, vision-centric, vibrant, and stylistically appealing. Rite One Consulting can help your institution improve its email marketing and communication practices through our design consulting and training services.

TECHNOLOGY CONSULTING

WWW.RITEONECONSULTING.COM



RITE ONE CONSULTING

ONLINE FORMS AND SURVEYS

Do you need to generate better feedback or gather more useful data for your church, school, or organization? If so, Rite One Consulting can help design professional-looking forms and surveys with a simple online form builder that can speed up and simplify your workflow and automate complex tasks. Our solutions allow you to securely and easily collect vital information that seamlessly integrates into other software solutions.

FACILITY MANAGEMENT AND CALENDARING SOLUTIONS

Unified facility management and calendar solutions do not need to be expensive or technically overwhelming. However, manipulating Google Calendar or other resources to be an actual event and resource allocation management system is usually not the ideal solution. Save time, money, and frustration by deploying a dedicated facility management and calendar solution. Rite One Consulting can help your institution select and deploy a solution that fits your needs and budget. We will also train and support your staff and lay leaders as system managers.

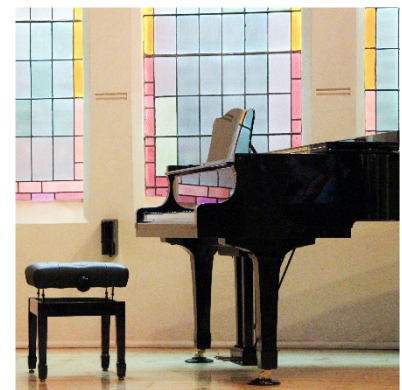
AUDIO/VISUAL CONSULTATION, DEPLOYMENT, AND TRAINING

The quality of your audio and visual solutions can make an extraordinary impact on your worship services, meetings, and events. Rite One Consulting offers a range of services, including system design consulting, component specifications, and training for your audio and visual needs. A/V solutions can be a significant investment; thus, we work with our clients to develop professional solutions that are affordable, scalable, and “end-user”-friendly. The Rite One team has decades of experience with all audio/visual facets—as worship and event leaders, technicians, musicians, and worshipers.

If you have a technology need other than the services listed above, please do not hesitate to contact us. We welcome the opportunity to customize our technology consulting services to the needs and vision of our clients.

TECHNOLOGY CONSULTING

WWW.RITEONECONSULTING.COM



RITE ONE CONSULTING

STEWARDSHIP TO OUR EPISCOPAL CHURCHES, SCHOOLS, AND ORGANIZATIONS

Joy Projects

Through our "Joy Projects" Initiative, Rite One Consulting pledges 20% of its project and technology consulting services pro bono (free or at a significantly lower cost) to Episcopal churches, schools, and organizations. We seek to partner with our Episcopal communities where the need is much greater than the available resources.

Potential applicants do not need a specific project in mind to begin the application process. Part of Rite One's role is to help leadership teams identify the best project for their church, school, or organization.

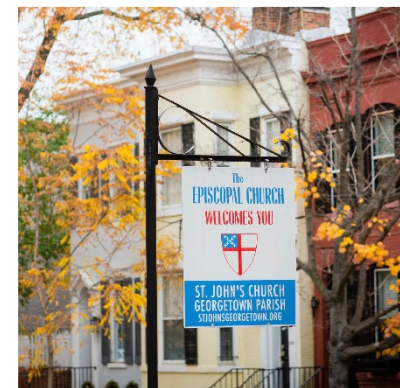
"We want to help Episcopal communities to dream, discern, and decide," says Founding Principal and Episcopal priest, The Reverend Ryan D. Newman. "By design, we do not have onerous guidelines for a project application. The most crucial expectation we have for Joy Project recipients is that their leadership team is 100% behind the project and is willing to be active and engaged partners with our Rite One Consulting team in helping make excellence happen."

Episcopal communities interested in applying for a Joy Project are asked to fill out the interest form on the Rite One Consulting website (www.riteoneconsulting.com/joy). A member of the Rite One team will contact potential applicants for a preliminary conversation. A more formal but simple application process follows if an applicant elects to proceed with a Joy Project application.

Rite One's goal is to work on at least one Joy Project each quarter. However, depending on the scope of current projects and available resources, Rite One hopes to add additional Joy Projects quarterly.

TECHNOLOGY CONSULTING

WWW.RITEONECONSULTING.COM



RITE ONE CONSULTING

THE REVEREND RYAN D. NEWMAN, PRINCIPAL

As an Episcopal priest with over 25 years of professional ministry experience, Ryan has served as a cathedral dean, rector, head of school, chaplain, operations director, teacher, coach, hospital chaplain, and non-profit executive director. Ryan has coached leaders throughout his professional career as they have navigated critical professional (and sometimes personal) challenges. He has worked extensively with small and large groups looking to better articulate their vision and develop new ways of living into their mission.

As both a priest and educator, the defining aspect of Ryan's vocation has been his service and leadership to Episcopal communities and organizations amid periods of significant growth and change. He has been both an architect and a builder of groups, communities, programs, strategic visions, and even physical spaces throughout his career. Ryan's colleagues, congregants, and clients universally praise him for his transformational leadership, tireless work ethic, and innovative vision for the Church and its leaders.

Ryan is deeply passionate about empowering and supporting faith, educational, and executive leaders in their communities. As our faith, school, and non-profit communities continue to seek out embodying excellence, new challenges and dwindling resources also confront them. Ryan was inspired to found Rite One as an affordable, effective, and collaborative partner for those communities wanting to make excellence happen—and happen often!

“We want to serve those who serve others,” says Ryan. “We are committed to serving our clients with extraordinary executive leadership coaching, and innovative project-based and technology consulting services. We want to help make excellence happen!”

Ryan is a graduate of the University of Southern California with a degree in Political Science and has a Master's in Divinity from the Virginia Theological Seminary. He lives in Orange County, California, with his wife Erin, a physician, and their daughter.



TECHNOLOGY CONSULTING

WWW.RITEONECONSULTING.COM

RITE ONE CONSULTING

OUR MISSION:

RITE ONE SERVES THOSE WHO SERVE OTHERS BY HELPING MAKE EXCELLENCE HAPPEN.

OUR VISION:

TO INSPIRE EXCELLENCE AND TRANSFORM COMMUNITIES BY BUILDING STRONG RELATIONSHIPS WITH OUR CLIENTS.

CONTACT INFORMATION

EMAIL: info@riteoneconsulting.com

PHONE: (949) 391-3476

ADDRESS: 31152 Oakmont Place, Laguna Niguel, CA 92677

WEB: www.riteoneconsulting.com

BLOG: www.riteoneconsulting.com/blog

FACEBOOK: fb.com/riteoneconsulting

NONDISCRIMINATION POLICY

Rite One Consulting complies with applicable Federal civil rights laws and does not discriminate on the basis of race, color, age, national origin, ethnic origin, sexual orientation, gender identity, gender expression, or disability in our services, programs, communications, and financial practices.